

AS670

Hematology Analyzer



AS670
Hematology Analyzer



FEATURES

AS670

Hematology Analyzer

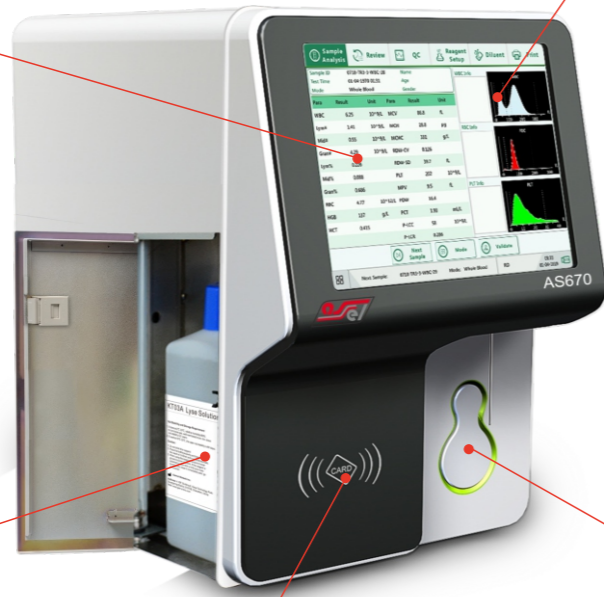
One-click to report with 22 parameters
One-touch for hardware diagnosis

Isolated boards and fluidic system
Reasonable interior design for easy maintenance

H400(mm)*D430(mm)*W280(mm)
Built-in reagent room

Highlighted indicator light
for status reminding

Built-in magnetic card system
Lyse & Diluent close



Technical Specifications

Principle

Impedance for cell counting
Cyanide-free method for HGB

Parameters

WBC, Neu#, Lym#, Mid#, Neu%, Lym%, Mid%, RBC, HGB, HCT, MCV, MCH, MCHC, RDW-SD, RDW-CV, PLT, MPV, PDW-SD, PDW-SC, PCT, P-LCR, P-LCC

Histograms

WBC, RBC, PLT histogram

Languages

English, Spanish, Italian, French etc.

Calibration

Manual, Auto and Fresh blood calibration

Quality control

3 level QC, LJ graph, X-B graph

Sample volume

Venous mode: 9µL venous blood
Capillary mode: 9µL capillary blood
Prediluted mode: 20µL capillary blood

Display

10.4-inch color touch screen
Liquid Crystal Display (LCD)
Resolution: 800×600

Storage

600,000 sample results with histograms

Reagent

Lyse(500ml) and Diluent(20L)

Printout

Thermal printer, support external printer

Maintenance

Auto-cleaning of sample probe and tubes

Temperature

10° C-35° C

Interface

USB port, Network port

Counting Chamber

WBC chamber: 100µm, RBC/PLT chamber: 70µm

Blockage clear

High voltage, high pressure flush

Net weight

17.5 Kg

Power

AC 100-240V, 50/60±1Hz

Dimension

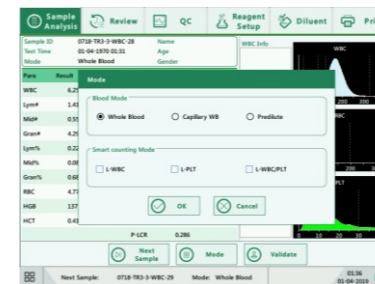
400mm×430mm×280mm

Performance

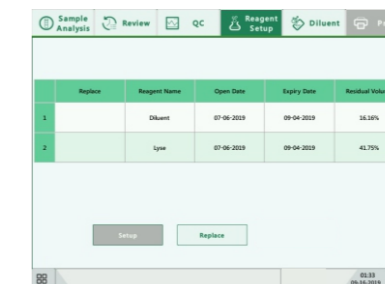
Precision	Parameter	CV	Measurement range
	WBC	≤ 2.0%	(3.5-15.0×10 ⁹)/L
	RBC	≤ 1.9%	(3.5-6.0×10 ¹²)/L
	HGB	≤ 1.9%	(110.0-180.0g)/L
	MCV	≤ 1.0%	(80.0-110.0)fL
PLT	≤ 4.0%	(150.0-500.0×10 ⁹)/L	

Linearity	Parameter	Measurement range
	WBC	(0-200.0×10 ⁹)/L
	RBC	(0-8.00×10 ¹²)/L
	HGB	(0-250.0g)/L
PLT	(0-5000×10 ⁹)/L	

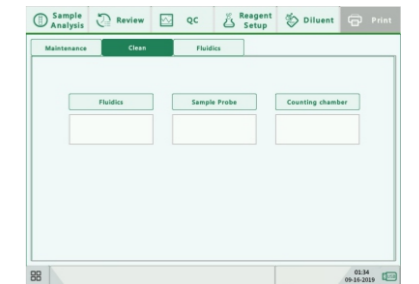
Software screenshot



Smart counting



Powerful reagent management



Easy maintenance